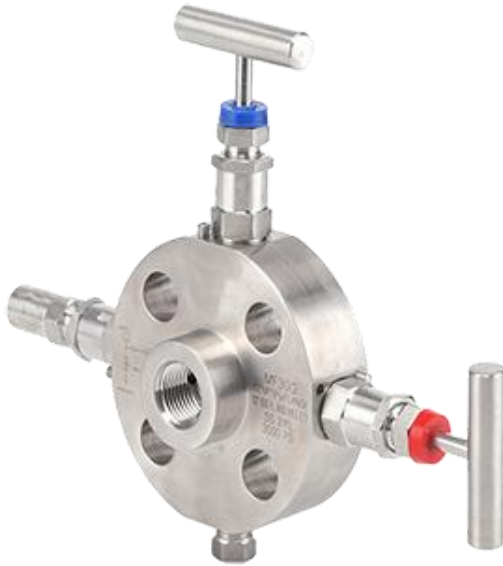


MF30G

Monoflange Double Block & Bleed Valve
(Flanged X Screwed)



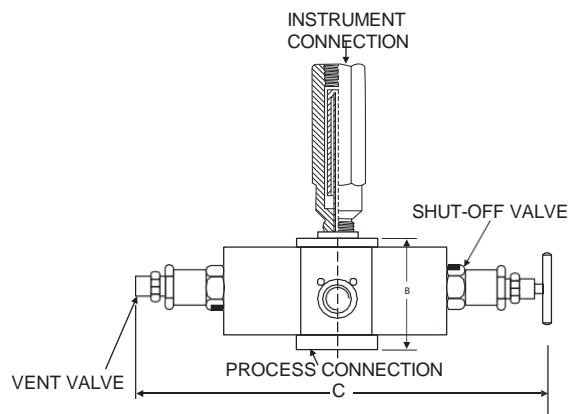
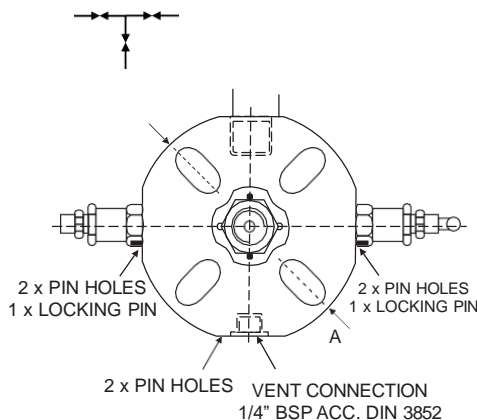
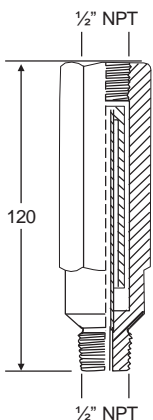
Monoflange Double Block and Bleed Valve with needle type pattern valve with non rotating spindle tip for positive bubble tight shut off function. Inlet 150/600# Flange, outlet NPT or BSP rotatable. Vent/test connection NPT female, isolating bonnet at front & right side and venting bonnet at left - instrument connection on top or side (multifunctional). It is supplied with INLET below mention Flange sizes.

Standard Connection

- Dimensions in mm.
- Monoflange Valves offer a compact alternative to traditional multi-valve assemblies, reducing weight, cost and the number of potential leak paths.
- PTFE or Graphoil Stem Seal.
- Outlet/Drain Screwed NPT - BSPP - BSPT.
- Inlet Flanged RF or RTJ.
- Material available : SS304, SS316, Carbon Steel, Monel 400, Monel 500
- Other materials on request.

Monoflange double block and bleed valve (Flanged x Screwed)

SIZE	150LB			300LB			600LB			900/1500LB			2500LB		
	A	B	C	A	B	C	A	B	C	A	B	C	A	B	C
1/2	95	45	205	95	45	205	95	50	205	121	50	231	133	50	243
3/4	98	45	205	117	45	227	117	50	227	130	50	240	140	50	250
1	108	45	218	124	45	234	124	50	234	149	50	259	159	50	269
1.1/2	127	50	237	156	50	266	156	55	266	178	55	288	203	55	313
2	152	50	262	165	50	275	165	60	275	216	60	326	235	60	345



Notes : • Drawings are not to scale. • All Dimensions are in mm.
For Further details please contact factory